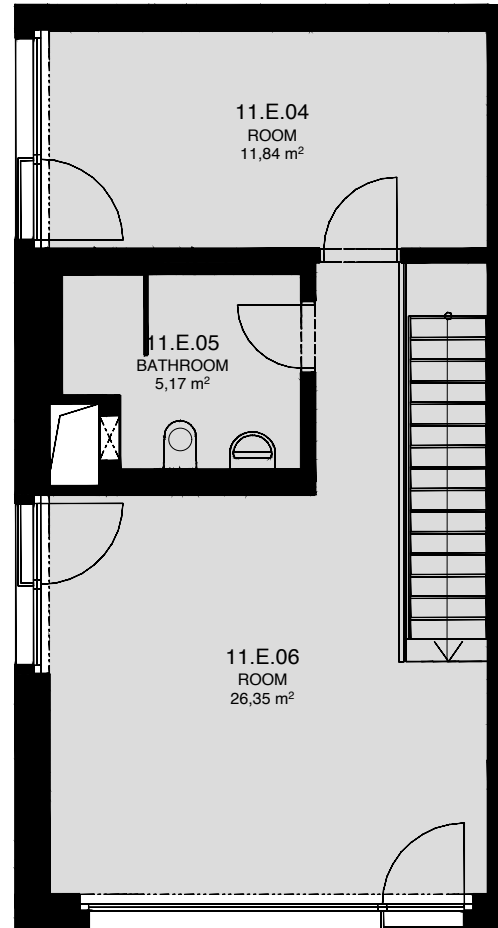
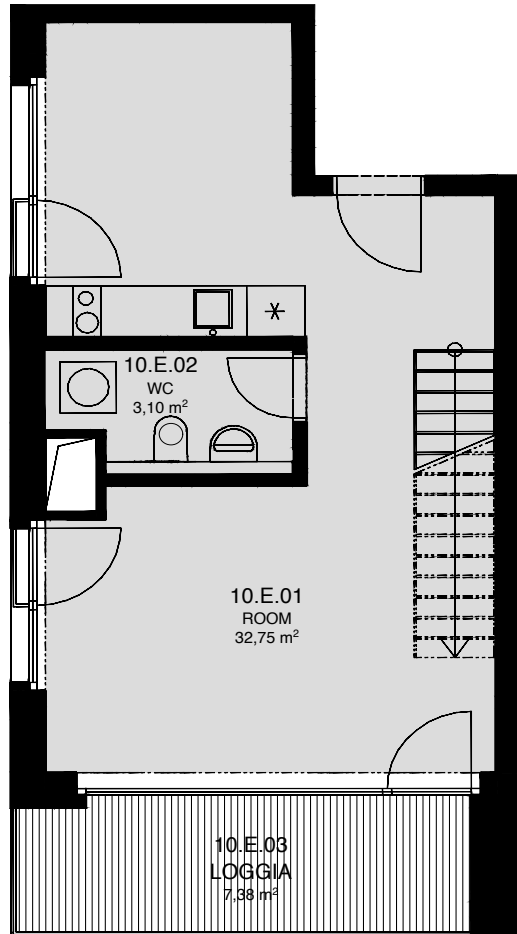


# LIGHTHOUSE

Královopolská 139, Brno - Žabovřesky



## 10,11E

TOTAL AREA: 88,70 m<sup>2</sup>

R.N.	ROOM NAME	AREA [m <sup>2</sup> ]
01	ROOM	32,75
02	WC	3,10
03	LOGGIA	7,38
04	ROOM	11,84
05	BATHROOM	5,17
06	ROOM	26,35

10.NP

11.NP



Total floor area of the unit: 81,30 m<sup>2</sup>

The total floor area of the unit is given according to the Government Regulation No.366/2013 Coll. The equipment and facilities shown are only illustrative. Standard equipment is determined by the text of the concluded contract, which includes an annex with a description of the standard equipment. The indicated areas and areas are only indicative. The Seller reserves the right to change.