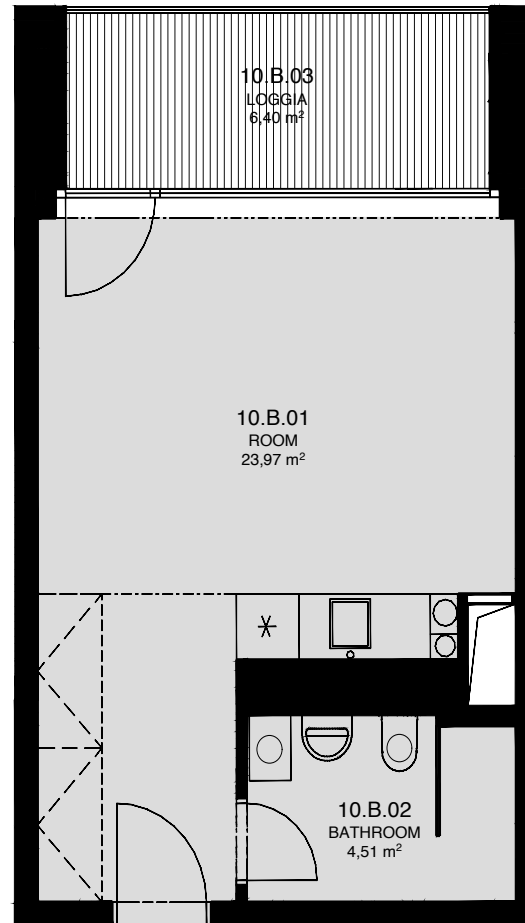


# LIGHTHOUSE

Královopolská 139, Brno - Žabovřesky



TOTAL AREA: **10.B**  
36,70 m<sup>2</sup>

R.N.	ROOM NAME	AREA [m <sup>2</sup> ]
01	ROOM	23,97
02	BATHROOM	4,51
03	LOGGIA	6,40



Total floor area of the unit: 30,30 m<sup>2</sup>

The total floor area of the unit is given according to the Government Regulation No.366/2013 Coll. The equipment and facilities shown are only illustrative. Standard equipment is determined by the text of the concluded contract, which includes an annex with a description of the standard equipment. The indicated areas and areas are only indicative. The Seller reserves the right to change.