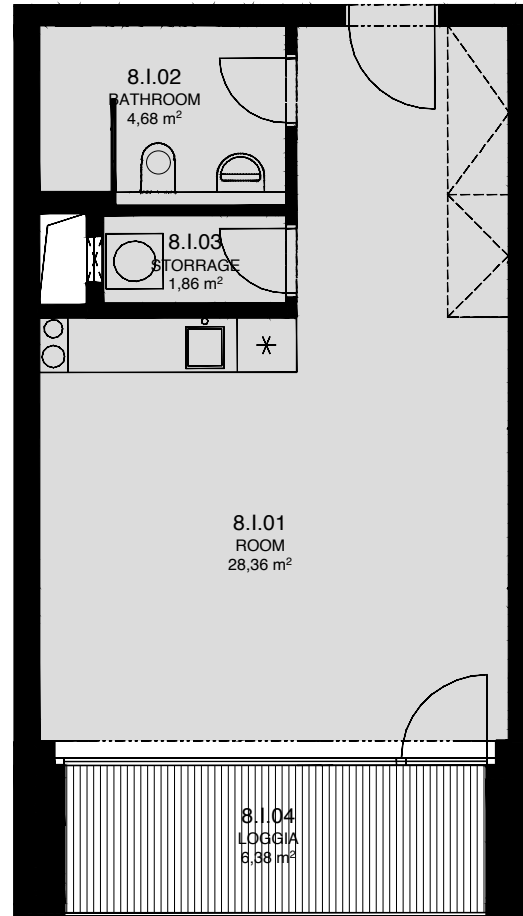


# LIGHTHOUSE

Královopolská 139, Brno - Žabovřesky



8.1  
TOTAL AREA: 43,80 m<sup>2</sup>

| R.N. | ROOM NAME | AREA [m <sup>2</sup> ] |
|------|-----------|------------------------|
| 01   | ROOM      | 28,36                  |
| 02   | BATHROOM  | 4,68                   |
| 03   | STORAGE   | 1,93                   |
| 04   | LOGGIA    | 6,38                   |



Total floor area of the unit: 37,40 m<sup>2</sup>

The total floor area of the unit is given according to the Government Regulation No.366/2013 Coll. The equipment and facilities shown are only illustrative. Standard equipment is determined by the text of the concluded contract, which includes an annex with a description of the standard equipment. The indicated areas and areas are only indicative. The Seller reserves the right to change.