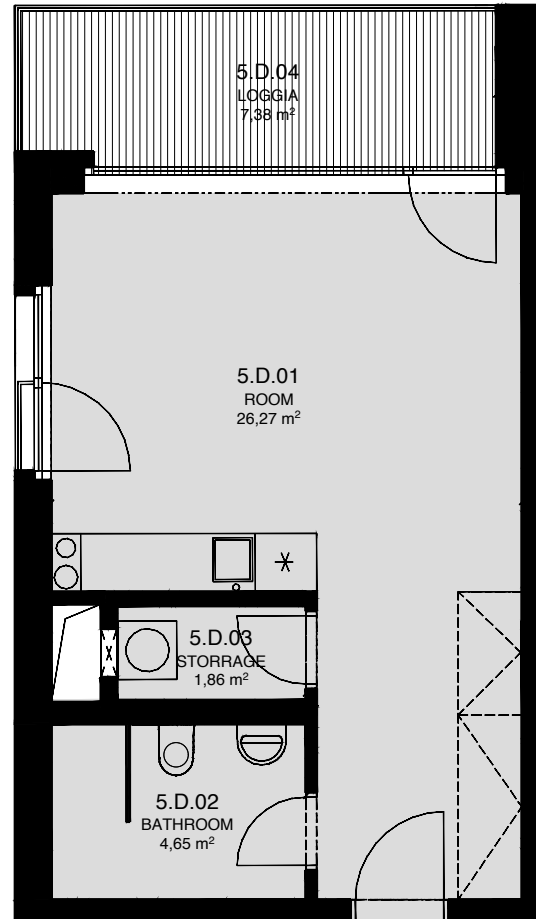


# LIGHTHOUSE

Královopolská 139, Brno - Žabovřesky



TOTAL AREA: **5.D**  
42,60m<sup>2</sup>

R.N.	ROOM NAME	AREA [m <sup>2</sup> ]
01	ROOM	26,27
02	BATHROOM	4,65
03	STORAGE	1,86
04	LOGGIA	7,38



Total floor area of the unit: 35,20 m<sup>2</sup>

The total floor area of the unit is given according to the Government Regulation No.366/2013 Coll. The equipment and facilities shown are only illustrative. Standard equipment is determined by the text of the concluded contract, which includes an annex with a description of the standard equipment. The indicated areas and areas are only indicative. The Seller reserves the right to change.