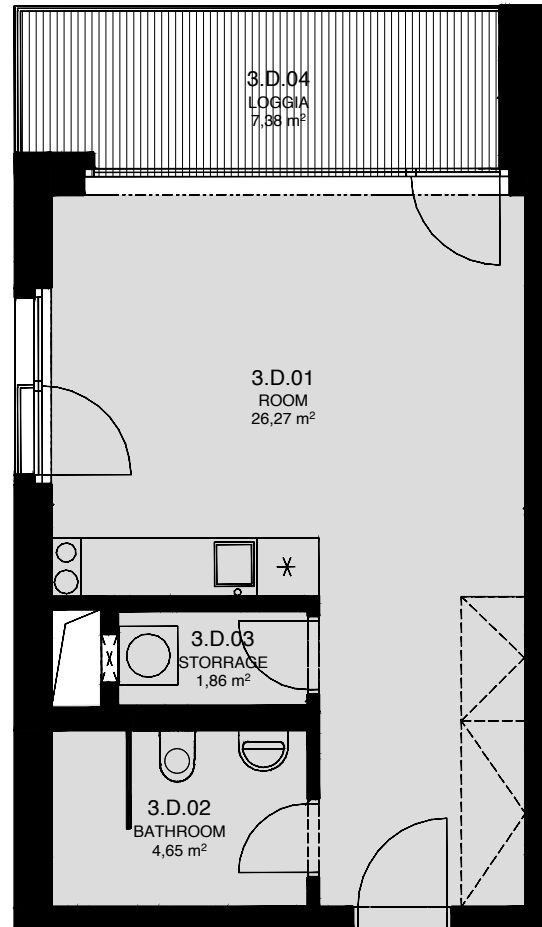


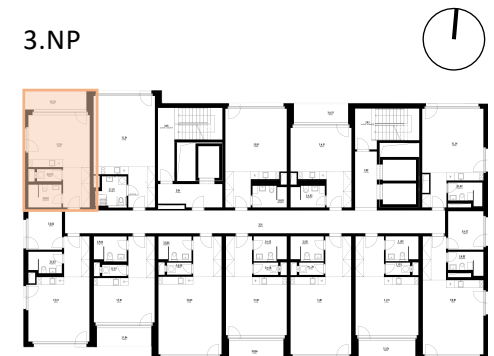
LIGHTHOUSE

Královopolská 139, Brno - Žabovřesky



3.D
TOTAL AREA: 42,60 m²

R.N.	ROOM NAME	AREA [m ²]
01	ROOM	26,27
02	BATHROOM	4,65
03	STORAGE	1,86
04	LOGGIA	7,38



Total floor area of the unit: 35,20 m²

The total floor area of the unit is given according to the Government Regulation No.366/2013 Coll. The equipment and facilities shown are only illustrative. Standard equipment is determined by the text of the concluded contract, which includes an annex with a description of the standard equipment. The indicated areas and areas are only indicative. The Seller reserves the right to change.