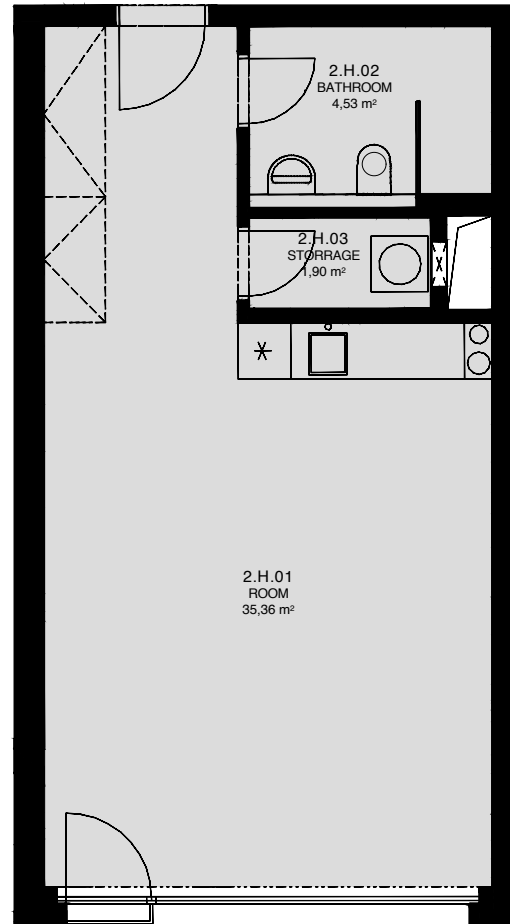


LIGHTHOUSE

Královopolská 139, Brno - Žabovřesky



TOTAL AREA: **2.H**
44,20 m²

| R.N. | ROOM NAME | AREA [m ²] |
|------|-----------|------------------------|
| 01 | ROOM | 35,36 |
| 02 | BATHROOM | 4,53 |
| 03 | STORAGE | 1,90 |



Total floor area of the unit: 44,20 m²

The total floor area of the unit is given according to the Government Regulation No.366/2013 Coll. The equipment and facilities shown are only illustrative. Standard equipment is determined by the text of the concluded contract, which includes an annex with a description of the standard equipment. The indicated areas and areas are only indicative. The Seller reserves the right to change.